



2017 Illinois Envirothon | Forestry



# Illinois Envirothon Study Guide



***Forestry***



## 2017 Illinois Envirothon | Forestry



### Citation:

Hayek, J. C., D. Shiley, and D. Cavanaugh-Grant. 2007. Illinois Envirothon Study Guide: Forestry. Department of Natural Resources and Environmental Sciences and Cooperative Extension. College of Agricultural, Consumer, and Environmental Sciences. University of Illinois at Urbana-Champaign. 15 p.

*The University of Illinois at Urbana-Champaign is an affirmative action, equal opportunity institution.*



## Acknowledgements

The Illinois State Envirothon Committee and the authors of this study guide would like to personally thank and acknowledge the following individuals and organizations for allowing their educational materials to be referenced and used as part of this guide.

DoITPoMS, University of Cambridge (image copyright)

Drs. Jeffrey Dawson and Rob Kantor, University of Illinois at Urbana-Champaign

Forestry Suppliers, Inc. <http://www.forestry-suppliers.com>

Illinois Forestry Development Council <http://ifdc.nres.illinois.edu/>

Maryland Cooperative Extension <http://extension.umd.edu/>

National 4-H Forestry Invitational Contest Reference Materials and Publications

- Forest Diseases Flashcards
  - <http://4hforestryinvitational.org/training/insect-and-disease-contest/list-of-diseases>
- Forest Insect Flashcards
  - <http://4hforestryinvitational.org/training/insect-and-disease-contest/list-of-insects>

Ohio State University Extension <http://extension.osu.edu/>

Oregon State University Extension Service <http://extension.oregonstate.edu/>

Pearson Education Inc., publishing as Benjamin Cummings

Penn State Cooperative Extension <http://www.extension.psu.edu/>

Purdue Extension <https://www.extension.purdue.edu>

USDA Forest Service <http://www.fs.fed.us/>

University of Illinois at Urbana-Champaign

Dept. of Natural Resources & Environmental Sciences <http://nres.illinois.edu>

Extension: <http://web.extension.illinois.edu>

University of Wisconsin Extension <http://www.uwex.edu/>

Wisconsin Department of Natural Resources <http://dnr.wiv.gov>



### FORESTRY OBJECTIVES

Envirothon forestry contestants should be able to:

- 1.** Identify native hardwood and conifer species by common name, leaf, twig, bark, and fruit characteristics.
  - a. Identify primary forest products produced from selected Illinois tree species
  - b. Identify general forest habitat type of selected tree species
  - c. Understand how to identify a tree using a dichotomous key
  - d. Understand the differences between an angiosperm (hardwoods) and gymnosperm (conifers/softwoods)
- 2.** Determine leaf arrangement (opposite/alternate/whorled) and determine whether leaf is simple (oak), palmately compound (buckeye), pinnately compound (ash), or bipinnately compound (honeylocust).
- 3.** Identify and define basic physiological components of a tree such as xylem, phloem, heartwood, sapwood, growth rings, buds, bundle scars, pith, etc.
- 4.** Understand basic forest ecology terms and the concepts of succession, disturbance, and tolerance.
- 5.** Define and understand common silvicultural (forest management) practices, including forestry best management practices (BMPs)
  - a. How and why various silvicultural treatments are utilized
  - b. Provide examples of forestry BMPs
- 6.** Explain how forest plant communities and management relate to preferred wildlife habitat.
- 7.** Provide an understanding and knowledge of past and current IL forest resources.
- 8.** Identify common forestry equipment and its principal use in forestry.
- 9.** Understand common forest measurement concepts and techniques.
  - a. Define board feet, basal area, cord, and chain
  - b. Calculate board feet from a standing tree or log using a volume table
- 10.** Read and interpret topographic maps and plat maps for standard land features, legal location, and acreage.
- 11.** Visually identify important tree diseases and the principal species they affect.
- 12.** Visually identify important tree insects and the principal species they affect.



## Table of Contents

<b>Section 1</b> – Tree Identification and Basic Tree Biology	6
<b>Section 2</b> – Forest Ecology, Silviculture, and Forest Wildlife Management	9
<b>Section 3</b> – Knowledge of IL Forest Resources and Benefits	12
<b>Section 4</b> – Forestry Equipment, Tree Measurements, and Map Interpretation	14
<b>Section 5</b> – Forest Health	15

### *Study Guide Developed by:*

Jay C. Hayek, Extension Forestry Specialist  
*Department of Natural Resources and Environmental Sciences  
University of Illinois at Urbana-Champaign*

Dave Shiley, Extension Educator (Local Food Systems and Small Farms)  
*University of Illinois Extension*

Deborah Cavanaugh-Grant, Extension Educator (Local Food Systems and Small Farms)  
*University of Illinois Extension*



Department of Natural Resources  
and Environmental Sciences  
UNIVERSITY OF ILLINOIS AT URBANA-CHAMPAIGN



UNIVERSITY OF ILLINOIS  
**EXTENSION**  
Helping You Put Knowledge to Work



## Section 1 – Tree Identification & Basic Tree Biology

### A. Tree Identification, Habitat, and Uses

1. Identify common tree species by leaf, twig, bark, and fruit samples. Be able to successfully “key-out” a tree using a dichotomous key. Identify the predominant forest habitat (upland; bottomland/riparian, or both; swamp) of the 33 species listed below. Furthermore, understand the primary commercial timber uses and wildlife benefit of “\*” tree species (refer to the 2009 *Forest Trees of Illinois* book).

<b>Gymnosperms</b>	<b>Angiosperms</b>	Silver Maple*
Eastern Larch (tamarack)	Yellow-poplar*	Eastern Cottonwood*
Eastern Redcedar*	Basswood*	Sycamore*
Northern White-Cedar	Black Cherry*	Shagbark Hickory*
Baldcypress*	Northern Red Oak*	Bitternut Hickory
Scots Pine	Shingle Oak	Pecan*
Red Pine	Pin Oak	White Ash*
Shortleaf Pine	Black Oak	Green Ash
Eastern White Pine*	White Oak*	American Elm*
	Bur Oak	Slippery Elm
	Swamp White Oak	Sassafras
	Sugar Maple*	Eastern Black Walnut*

2. Understand common tree identification characteristics such as leaf arrangement (alternate, opposite, whorled); leaf forms (simple, pinnately compound, bipinnately compound, and palmately compound); winter twig characteristics; leaf shapes, margins, bases, and tips; and fruit type (refer to the 2009 *Forest Trees of Illinois* book).
3. Gymnosperm vs. Angiosperms (as related to common IL trees)
  - a. Gymnosperm: naked seed (typically in a cone-like structure); needle-leaf
  - b. Angiosperm: enclosed seed; typically broadleaf

### Section 1 Folder: [Tree ID]

*In addition:*

Missouri’s Oaks and Hickories

<http://forestkeepers.org/wp-content/uploads/2013/05/Missouris-Oaks-and-Hickories.pdf>

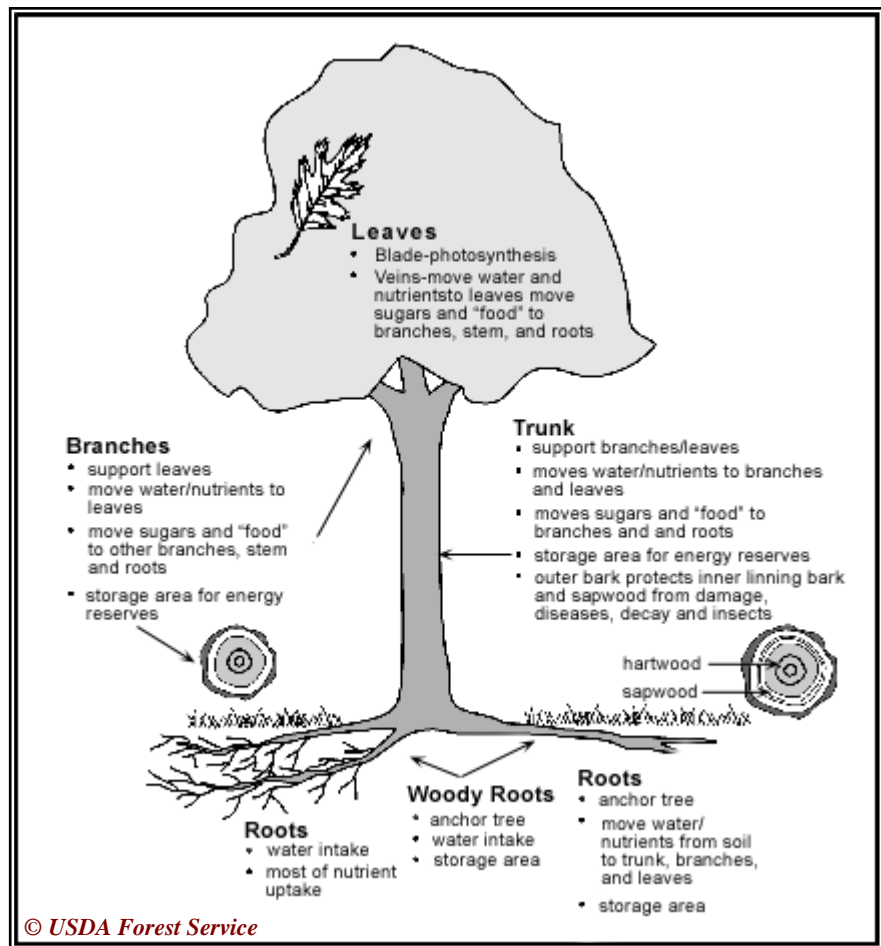
Hayek, J.C. (ed.). 2009. *Forest Trees of Illinois*. 10th ed. University of Illinois at Urbana-Champaign, College of Agricultural, Consumer, and Environmental Sciences, Cooperative Extension Service. 340 p.



## B. Basic Tree Biology

### 1. Identify basic tree parts and define function of tree growth zones

- Crown
  - Leaves
  - Branches
- Trunk
- Roots

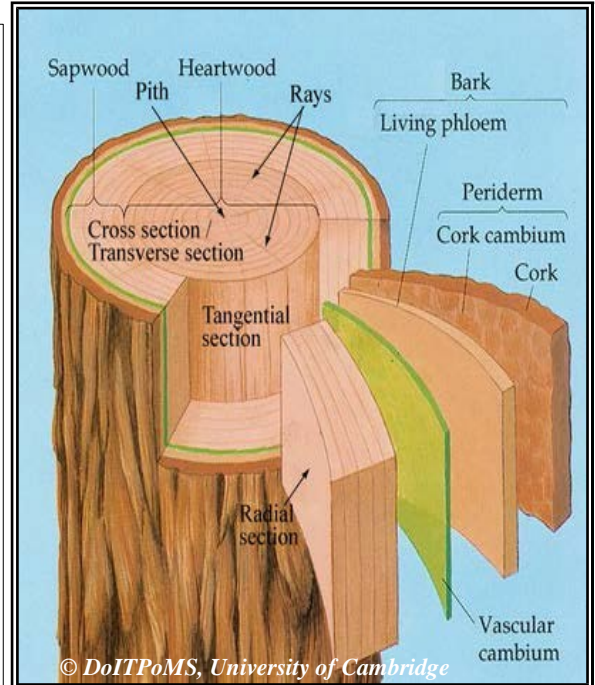
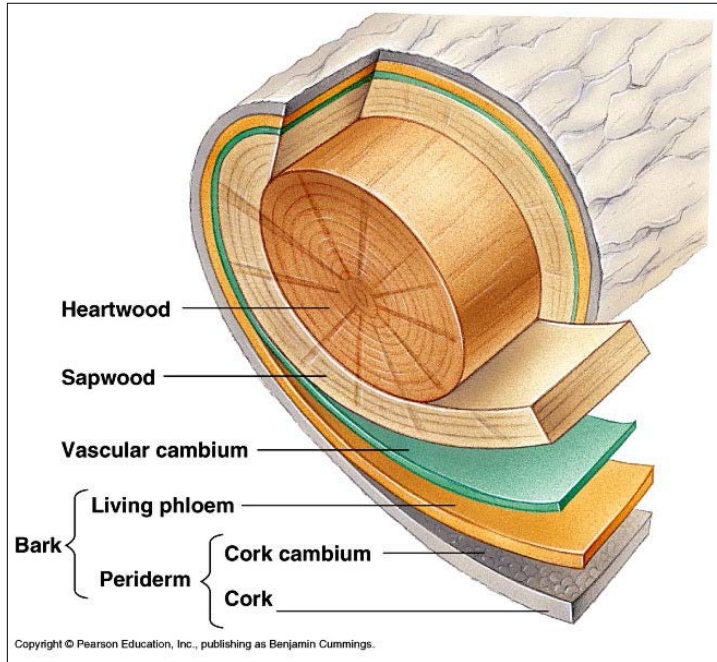


### 2. Understand and explain typical tree growth and life cycle including the pattern of tree growth rings



3. Identify parts and define function of “trunk” growth zones

- a. Bark
- b. Cambium
- c. Xylem
- d. Phloem



Section 1 Folder: [Basic Tree Biology]





## Section 2 – Forest Ecology, Silviculture, and Forest Wildlife Management

### A. Basic Forest Ecology Concepts

1. Identify the major factors influencing forest composition and structure in Illinois forests.
2. Understand ecological succession and the successional trends common to present-day Illinois oak-hickory forests and the major factors leading to this trend.
3. Understand forest disturbance and provide several common examples.
4. Understand concepts and examples of shade tolerance and flood tolerance.
5. Describe commodity and non-commodity values and benefits of forests.
6. Be able to define the following forest ecology terms:

Biodiversity	Conservation	Prescribed Fire	Watershed
Succession	Ecology	Ecosystem Management	Forest
Regeneration	Carbon Sequestration	Competition	Silviculture
Riparian Forest Buffer	Forester	Forestry	Agroforestry
Canopy	Fragmentation	Disturbance	Wildlife Habitat

**Section 2 Folder: [Forest Ecology]**



### B. Basic Silvicultural Terms & Concepts

1. Be able to define general silvicultural terms, methods, and concepts applicable to Illinois forests and the factors that influence forest management decisions (e.g., economic, social, aesthetics, regeneration, wildlife, ecological, water quality, etc.).
2. Understand concept of shade tolerant vs. shade intolerant with regard to forest regeneration and competition.
3. Define general silvicultural intermediate treatments:
  - Crop tree release
  - Improvement cutting (a.k.a., timber stand improvement...TSI)
  - Thinning
  - Pruning
  - Salvage and Sanitation Cutting
4. Understand General Forest Regeneration Harvest Methods
  - Even-aged regeneration methods (best for shade intolerant species)
    - Shelterwood
    - Clearcut
    - Seed Tree
  - Uneven-aged regeneration methods
    - Group selection
    - Single-tree selection
5. Define and understand concept of forestry best management practices (BMPs)
  - a. Forestry BMPs are preventative measures that minimize erosion impacts and water quality issues resulting from forest management operations.
    - i. Examples: water bars; riparian buffers; streamside management zones (SMZs); portable skidder bridges; reseeding skid trails; culverts; etc.
6. Understand duties and functions of a professional forester
  - a. DNR district forester – free services to private forest landowners including forest management plans, timber sales, improvement marking, tree planting plans, government forestry programs, general forest management guidance, and education.
  - b. Consulting forester – services provided on fee basis including timber appraisals, timber sales, forest management plans, litigation, tree planting, forest improvement work, and timber basis.

**Section 2 Folder: [Silviculture]**



### C. Basic Forest Wildlife Management

Explain how forest plant communities relate to the preferred habitat of the following wildlife species (i.e., forest cover types; age structure; snags and dead-and-downed trees; availability of food; and riparian areas). <https://www.extension.purdue.edu/extmedia/FNR/FNR-102.html>

Wildlife Species
Beaver
Bobcat
Bobwhite Quail
Eastern Wild Turkey
Great Horned Owl
Grey Squirrel
Mink
Red-eyed Vireo
Whitetail Deer
Wood Duck

#### Section 2 Folder: [Forest Wildlife Management]

*Including:*

Wildlife Habitat Evaluation Handbook (September 2014) by Dwayne Elmore, Craig Harper, and Jennifer Mercer, Oklahoma State University, Cooperative Extension Service, Stillwater, Oklahoma. p. 335. <https://ag.purdue.edu/fnr/discover/Documents/WHEPmanual2014.pdf>



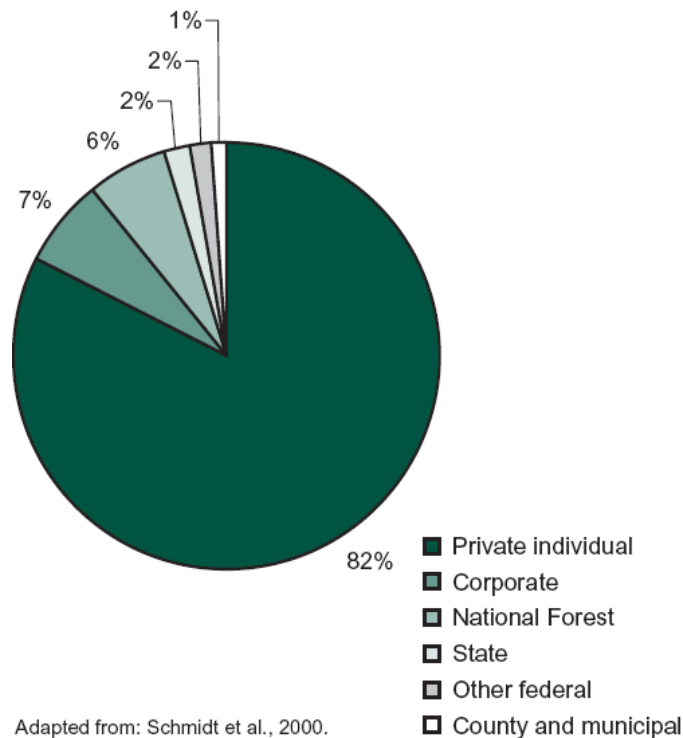
### Section 3 – Knowledge of IL Forest Resources & Benefits

#### A. Understand the General History of Illinois Forests from Presettlement to the Present

Based on Crocker and Little’s (2007) latest assessment of Illinois’ forest resources, Illinois is home to approximately 4.8 million acres of forest land. According to the Illinois Department of Natural Resources, over 169,000 private forest landowners control nearly 3.7 million acres of forest land, or 82% of Illinois’ forest land base. The average forest ownership size in Illinois is approximately 21 acres. Nearly 97% of Illinois forests are comprised of hardwoods (angiosperms) with the remaining 3% comprised of conifers (gymnosperms).

Be able to describe Illinois’ changing forest trends since settlement: 1820 – 13.8 million acres of forest land; 1924 – 3.0 million acres; 2005 – 4.5 million acres; 2007 – 4.8 million acres.

**Figure 36.**  
Percentage of timberland in Illinois by ownership class, 1998..





## 2017 Illinois Envirothon | Forestry



1. Identify major forest types found in Illinois and the characteristic species associated with each forest type:
  - Oak-Hickory (65%)
  - Elm-Ash-Cottonwood (22%)
  - Maple-Beech-Birch (8%)
  - Oak-Gum-Cypress (2%)
  - Oak-Pine (1%)
  - Loblolly-Shortleaf Pine; White-Red-Jack Pine (2%)
2. Be able to analyze and “type” a specific forest based on dominant tree species and habitat.
  - a. Example: Predominant tree species in this forest consist of mature green ash, silver maple, bur oak, and cottonwood.
    - i. Answer = Elm-Ash-Maple forest type: floodplain/bottomland forest
3. Understand the value of trees in urban/suburban settings and the factors affecting their health and survival.

### **Reference Folder #3 [Knowledge of IL Forest Resources & Benefits]**



## Section 4 – Forestry Equipment, Tree Measurements, and Map Interpretation

### A. Forestry Equipment [identify and understand use]

Biltmore Stick	Caliper
Clinometer	Compass
Diameter Tape (D-Tape)	Geographic Positioning System (GPS)
Increment Borer	Merritt Hypsometer
Prism	Relascope

#### Reference Folder #4 [Forestry Equipment]

### B. Basic Tree Measurements

1. Be able to determine tree DBH (diameter breast height), number of merchantable 8' logs, and total merchantable volume using a Biltmore stick, Merritt hypsometer, and volume table.
2. Define DBH (diameter breast height), basal area, cord, board feet, and tree/log volume.

#### Reference Folder #4 [Tree Measurements]

### C. Topographic and Plat Map Interpretation

1. Correctly identify map symbols from *4-H\_Map\_Symbols.pdf*
2. Correctly measure distance, contour intervals, etc., from a Topo Map
3. Provide the legal description and acreage of a “shaded” area using a plat map

#### Reference Folder #4 [Map Interpretation]



## Section 5 – Forest Health

### A. Identify Eight Major Tree Diseases and their environmental and economic impact

Anthracnose	Dutch Elm Disease
Armillaria Root Rot	Nectria Canker
Black Knot	Oak Wilt
Cedar-Apple Rust	Verticilium Wilt

1. Visually identify important tree diseases and the principal species they affect.

### Reference Folder #5 [Forest Health – Tree Diseases]

---

### B. Identify Twelve Major Tree Insects and their environmental and economic impact

Asian Longhorn Beetle	Hemlock Woolly Adelgid
Eastern Tent Caterpillar	Japanese Beetle
Emerald Ash Borer	Mountain Pine Beetle
European Elm Bark Beetle	Red Oak Borer
Fall Webworm	Southern Pine Beetle
Gypsy Moth	Two-lined Chestnut Borer

1. Visually identify important tree insects and the principal species they affect.

### Reference Folder #5 [Forest Health – Tree Insects]